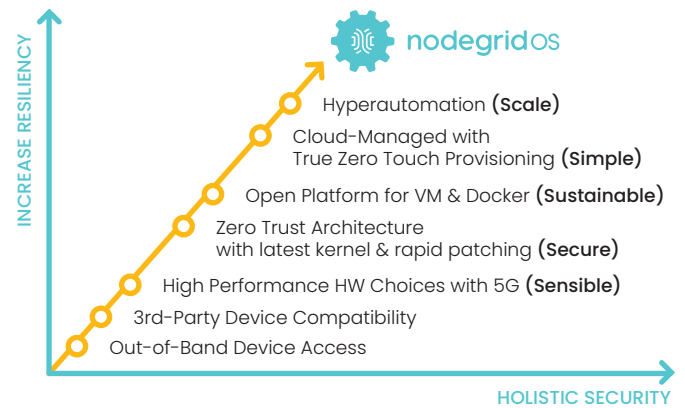


Data Center Solutions

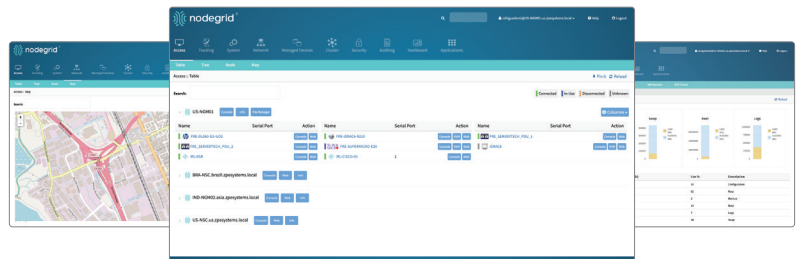
ZPE Systems® (ZPE) offers Out-of-Band (OOB) solutions for the data center and colocation, from automation and scripting capabilities to flexible Zero Touch Provisioning for fast and consistent deployments. ZPE Systems' Nodegrid™ RS-232 & USB serial consoles and modular services routers lead the market with a focus on innovation, quality, security, and service. The following is the latest in Data Center Solutions featuring vendor-neutral OOB management, power management integration, and secure hyperautomation.



Nodegrid™ Manager Open Infrastructure Management Software

Manage all of your IT assets and devices, regardless of vendor, under a single, unified management platform. Simplify administration with normalized controls and commands.

Nodegrid™ Manager provides you with a unified solution to control compute, network, storage, and smart power assets.



- **Single screen access & control experience of physical & virtual assets** (VMware, KVM)
- **Software-defined infrastructure** for quick & easy infrastructure deployment
- **Vendor-neutral support** for all IT asset types & console protocols
- **Save time** with policy-based discovery & management
- **Slash CAPEX/OPEX & training time & costs** by using secure KVM-over-IP & IPMI tools along with commodity hardware
- **All-in-one VM installs** from a bootable ISO; no other software required
- **Easy Day-Zero Provisioning**
- **Vendor & Technology Agnostic** Avocent/Vertiv, Opengear, Raritan, APC, Cisco, NetApp, HP iLO, Dell iDRAC, IPMI, Redfish & more
- **Physical & Virtual Consoles** RS-232 Serial, VMware MKS & Serial
- **KVM-over-IP, SSH, & more**
- **Multi-Vendor Power Management** Supports APC, Avocent, Chatsworth, CyberPower, Eaton, Enconnex, Geist, Liebert, Raritan, Rittal, & Server Technology (with more being added)

Nodegrid™ Serial Console S Series Next-Generation of Serial Consoles



Nodegrid™ Serial Console S is perfect for upgrades and retrofits to your existing environment. Remove guesswork with auto-sensing capabilities, whether using straight-through cables or legacy adapters. Nodegrid™ will auto-sense configurations and allow for management and control. The S series also features built-in support for console ports via USB.

- **Modern 64-bit Linux OS**
- **World's highest concurrent session in a serial console: 1,000+ sessions**
- **World's fastest concurrent port speeds in a serial console: 921,600bps & 20 users per port**
- **HTML5: No Java issues** unlike outdated competitors
- **16 to 96 RJ45 RS-232 Serial Ports @ 230,400bps & 14 USB serial ports @ 921,600 bps**
- **Ideal for in-place upgrades of legacy console switches** due to its built-in software Auto Switching (Cisco or Legacy Pin-out)
- **Extensible Applications** with virtualization & containers
- **Optimized for Data Center & Colocation** deployments & operations, bare-metal booting & firmware recovery, & Zero Touch Provisioning
- **Eliminates barriers to hyperautomation** with support for scripting, RESTful APIs, Puppet, Chef, & Ansible management



FRONT

BACK



Nodegrid™ Serial Console Plus Secure Remote Access & Control for IT

Nodegrid™ Serial Console Plus (NSCP) is the data center's next generation of serial console server, providing secure, hyperscale remote access and power management to all IT devices, regardless of manufacturer. NSCP provides fast, secure, and reliable In-Band and Out-of-Band access to server, network, storage, power, and other serial console devices for faster problem resolution. When coupled with ZPE's vendor-neutral Nodegrid™ Manager software, IT staff immediately gain centralized access to NSCP devices and all other physical and virtual assets (VM, Service Processor, KVM/IP) managed by the software, providing a truly hyper-converged infrastructure management solution.

- **Extensible Applications** with virtualization & containers
- **Zero Touch Provisioning (ZTP)** over the WAN for fast & easy setup in remote locations
- **Integrates with ZPE Cloud & Nodegrid™ Manager** vendor-neutral, unified management solution
- **Modern x86-64bit Linux Kernel** for fast security patching and widespread software availability
- **Extended Automation** based on actionable data
- **Failover to built-in 5G/4G/LTE & Wi-Fi**
- **Gateway & multi-routing table capability**
- **SSL VPN & Secure Tunnel**
- **Firewall Built in**
- **Secure selectable encrypted cryptographic protocols & cypher suite levels, configuration checksum™**
- **Power Control & Monitoring** to help you get alerts on IT device health and solve problems automatically
- **Orchestration** via Puppet, Chef, Ansible, RESTful APIs

Nodegrid™ Net Services Router

Modular Services Router with Guest OS Support & Network Function Virtualization (NFV)

Nodegrid™ Net Services Router (NSR) is a modular open platform appliance designed to provide Out-of-Band (OOB), guest OS, converged infrastructure, networking, cybersecurity, NFV, IoT, and power management for DevOps, SD-WAN, retail and remote offices and locations.

NSR is optimized to perform physical and virtual network functions including switching, routing, security, SDN, uCPE, Cellular Failover with Secure Tunneling and more.

Having enterprise-grade security protocols baked in means you gain secure OOB remote access to your environment, with running Docker and Kubernetes applications and controlling IT devices at the edge of the network, and within converged infrastructure (CI) environments.



16-Port GbE Ethernet



8-Port Ethernet PoE+



16-Port GbE Ethernet SFP



8-Port GbE Ethernet SFP+



16-Port Serial



16-Port USB Serial



M.2 Cellular / Wi-Fi / SATA



Storage



x86 Intel Computer Card

- **Modular** x86 open platform appliance with a variety of interface cards
- **NFV & Guest OS Support** Virtual router, firewall, security, WAN accelerators from best-of-breed vendors
- **SD-WAN** Architecture that overcomes the traditional WAN drawbacks
- **SDN** Separation of control plane & data plane
- **Layer 2 Switching, QoS, MPLS, Client/Server VPN, multi-sites IPSEC**
- **Vendor-Neutral OOB** Serial & USB consoles, IPMI, power management
- **Layer 3 Routing, BGP, OSPF, RIP Routing support**
- **DevOps** Automation scripts via ZTP, Docker, Kubernetes, RESTful, Puppet, Chef, Ansible
- **Failover** 4G/5G/ LTE cellular modem with dual SIM for failover/on-demand, Wi-Fi AP (Hotspot or Client)
- **Collaboration & uCPE** Compute server module for virtualization & containers
- **Fine-Grain Security, 2-Factor Authentication, Policy-Based** via AD/LDAP,
- **ZPE Cloud & Nodegrid™ Manager Software** for 360° view, natural search, clustering
- **Firewall** IP packet & security filtering
- **Auditing** Data logging (sessions), environment monitoring, event notification & alarms